

EP-2008 Firmware Upload (no previous f/w present)

Requirement:

1. Windows XP with SP3
2. SD/MMC Card (2GB or smaller, SDHC not supported)
3. SD/MMC Card Reader

Step-by-step Guide:

1. Create SDNAND Recovery Utility
 - ◆ Place 512 MB SD/MMC Card to the SD/MMC Card Reader that is connected to PC. Run “Recovery SDCard Flasher.exe”. (Fig.1)



Fig.1

- ◆ A dialog window will appear. (Fig.2)

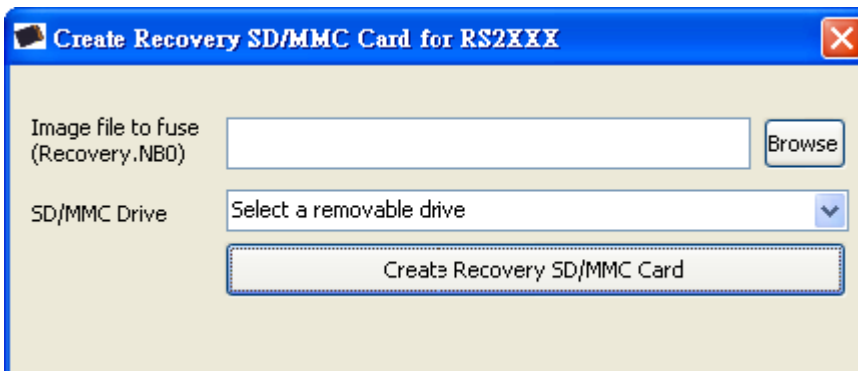


Fig.2

- ◆ Click on “Browse” and select “EP20XX Recovery Image.nb0”; In SD/MMC Drive dropdown menu, select the SD/MMC card drive letter. For example, H:\()-FAT32. (Fig.3)

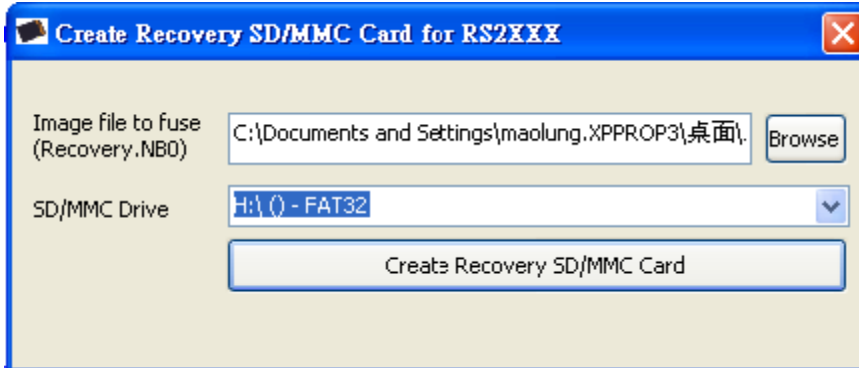


Fig.3

- ◆ Click on “Create Recovery SD/MMC Card”, wait for couple of minutes. When the process is completed, a dialog window will appear. Click on “Done” (Fig.4)



Fig.4

2. Firmware Update

- ◆ Copy “EBOOT.bin”, “NK.bin”, and “STEPLDR.nb0” into the just prepared SD/MMC card. Remove the SD/MMC card from the reader, and insert it into the EP2000 Series M/B. Before connecting the power, first set the jumper of the processor card as shown in Fig.5 below, and then insert the processor card into the M/B.

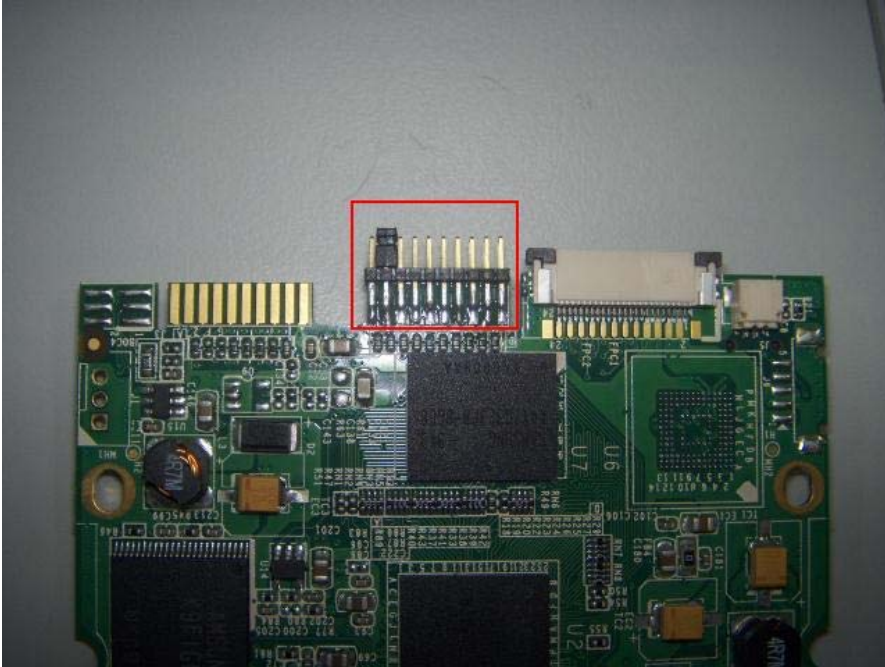


Fig.5

- ◆ After power is connected, the following screen will be displayed on the LCD panel. (Fig.6)

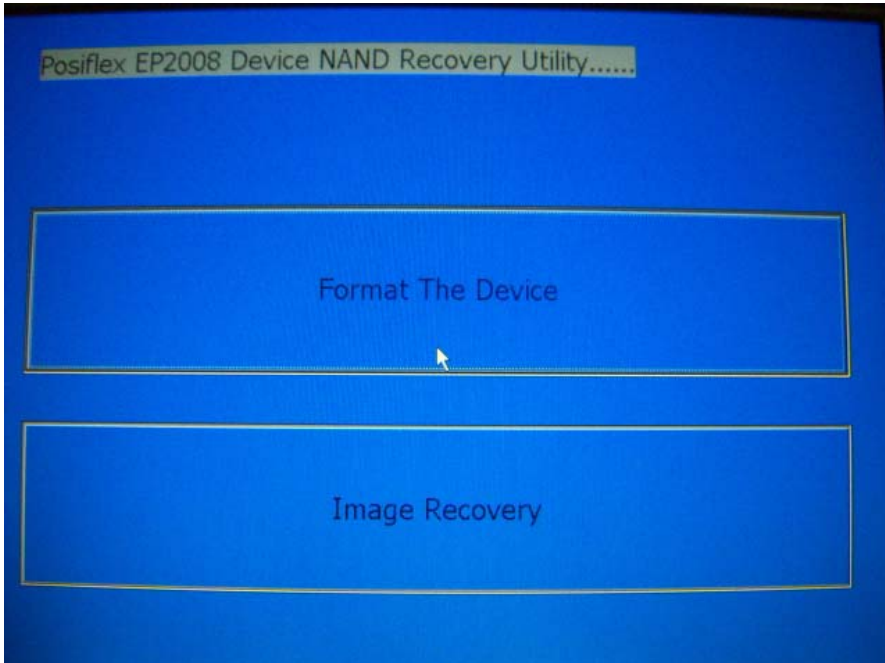


Fig.6

- ◆ Since mouse will not work at this time, use the touch panel to click on “Format The Device” button. If the “Device Formatted Successfully” message appears (Fig.7), then click on “Image Recovery”.

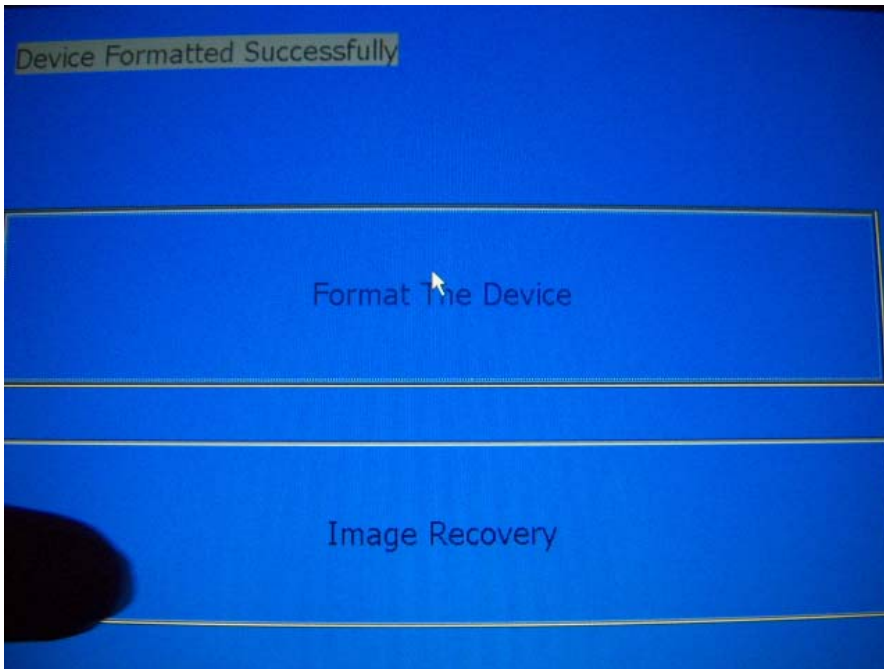


Fig7

- ◆ Wait for couple of minutes for the process to complete. (Fig.8)

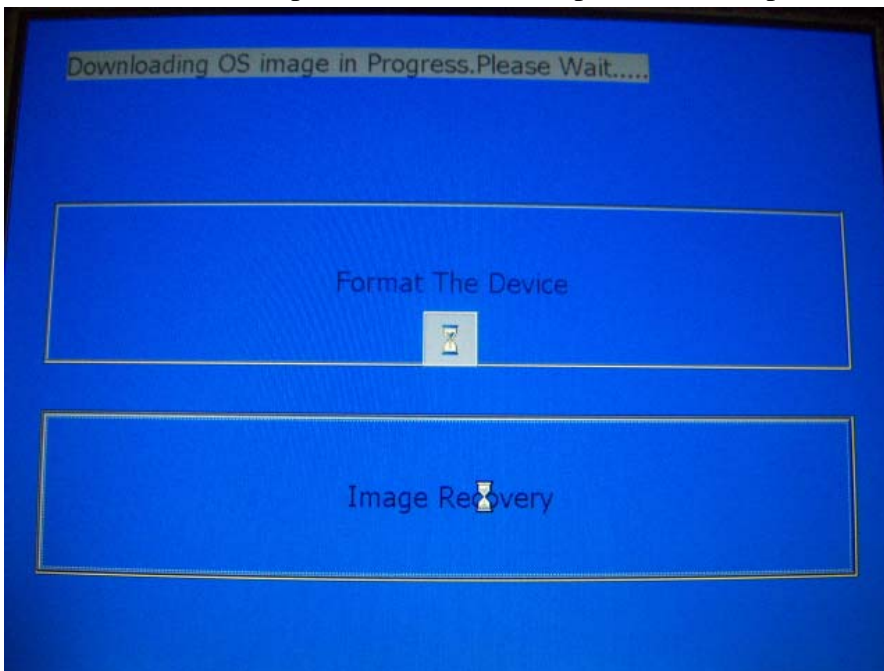


Fig.8

- ◆ When the “Please Set the Device into NAND boot...” message appears (Fig.9), disconnect the power.

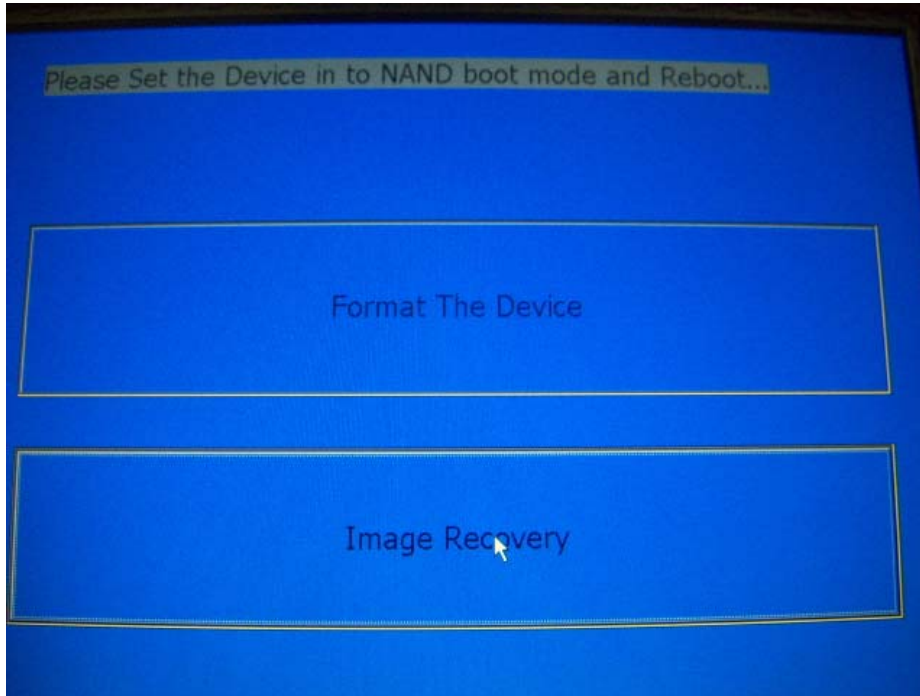


Fig.9

- ◆ Remove the processor board from the M/B, and then remove the jumper that was set previously from the processor board (Fig.10). Now insert the processor board back to the M/B, and connect the power to boot up EP-2008.

